

iPhone/iPad email setup guide



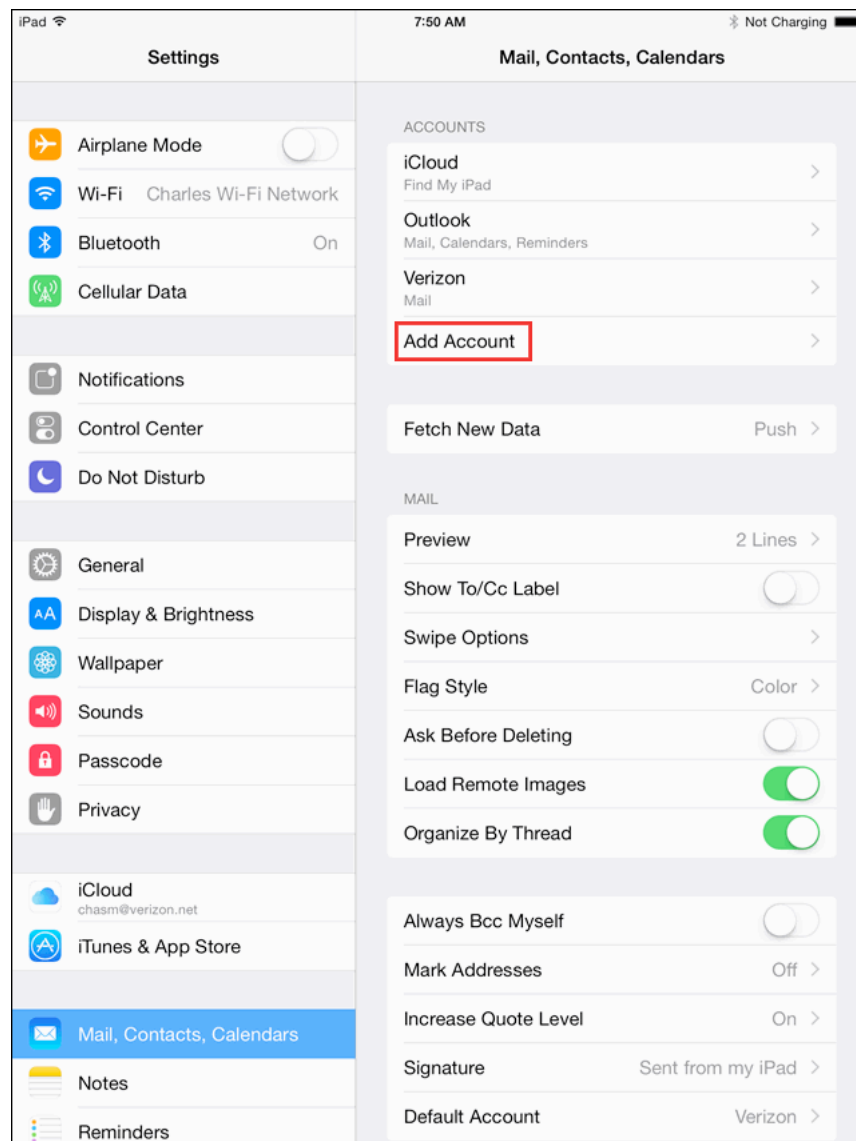
1. Tap Settings.



iPhone/iPad email setup guide



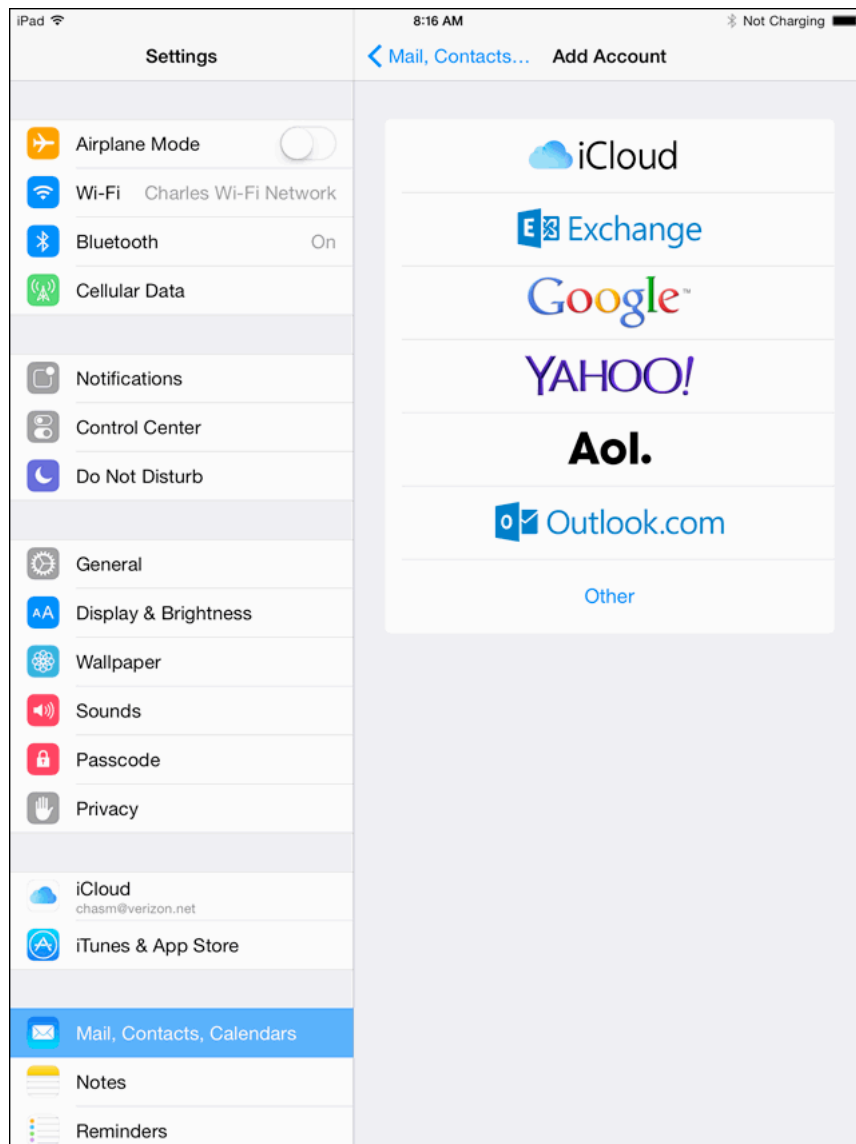
2. In the Settings dialog, tap Mail, Contacts, Calendars and tap Add Account



iPhone/iPad email setup guide



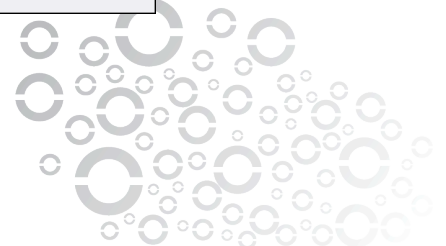
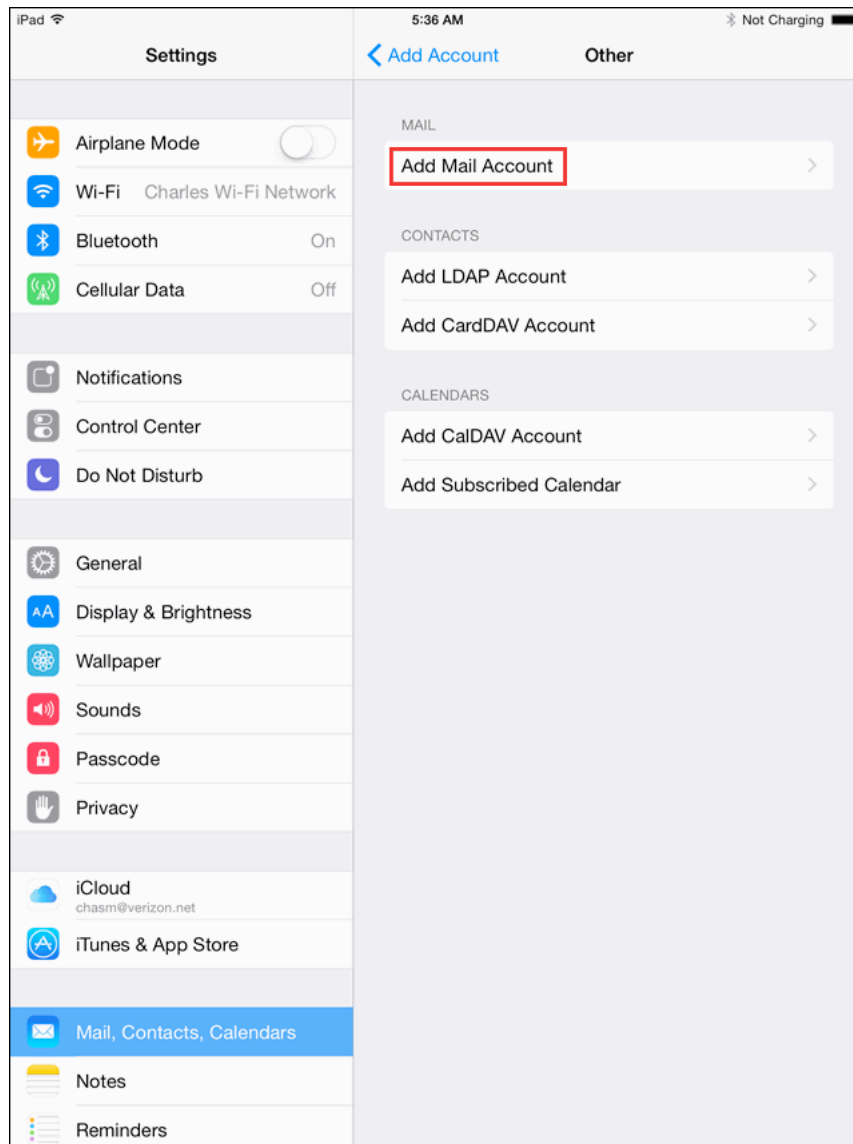
3. Select your email provider. If you don't see your email provider listed, tap Other.



iPhone/iPad email setup guide



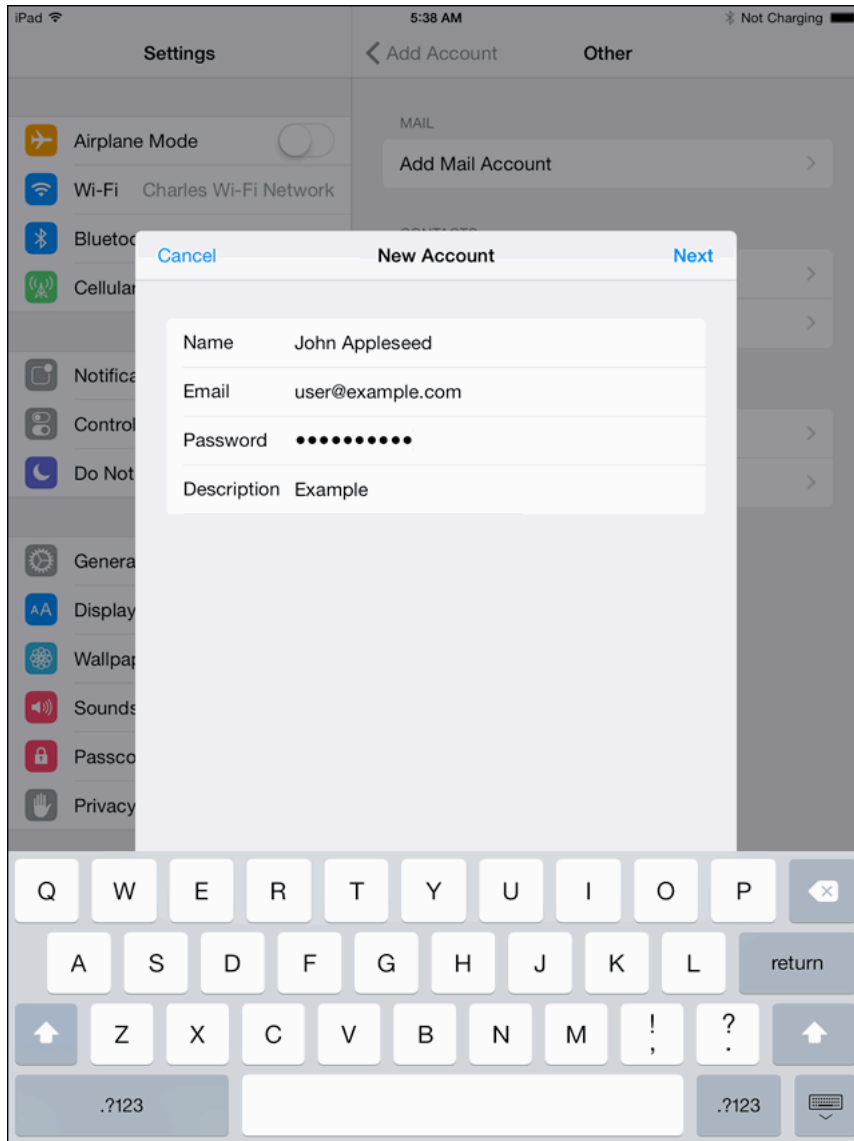
4. Tap Add Mail Account.



iPhone/iPad email setup guide



5. Enter your information



iPhone/iPad email setup guide



6. Enter server information. Same information applies to POP.

Incoming Server POP3

pop.uniserve.com

port 110

SSL :

username: full email address

password: current password

Outgoing SMTP

mail.uniserve.com

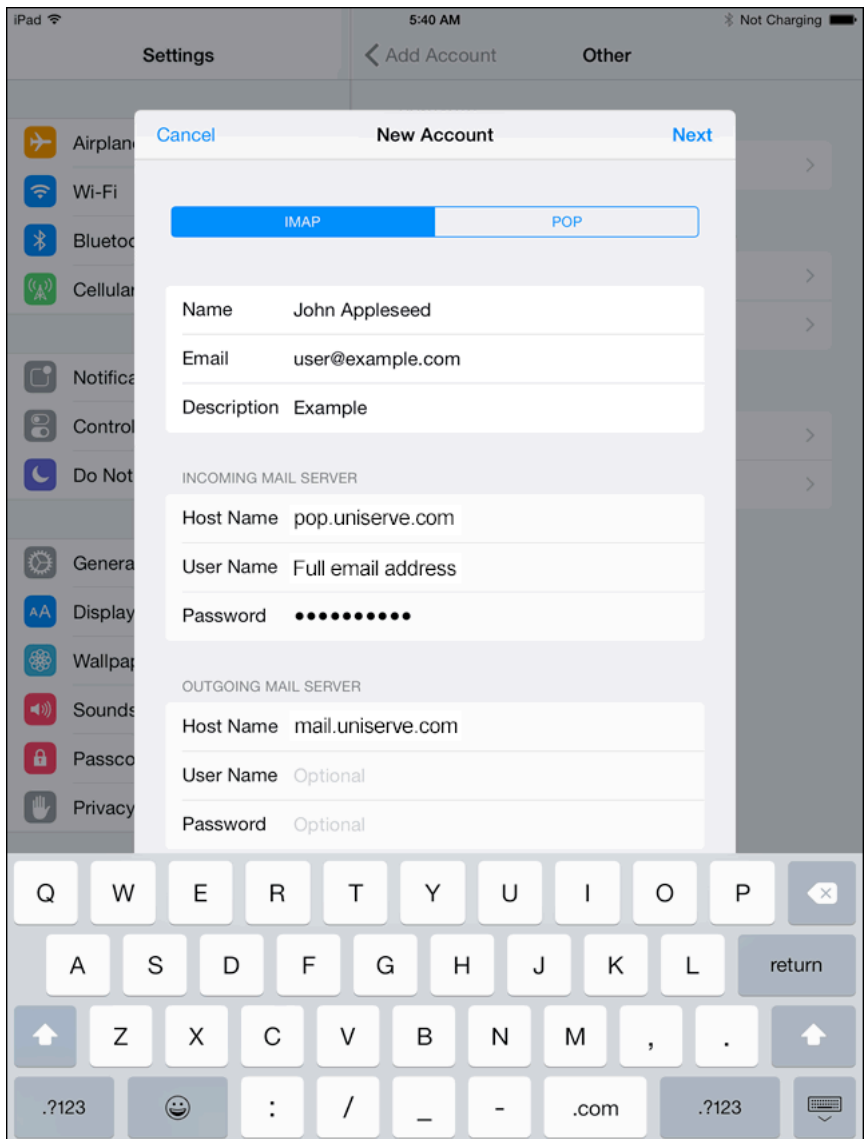
port 465

ssl on

auth on

username: full email address

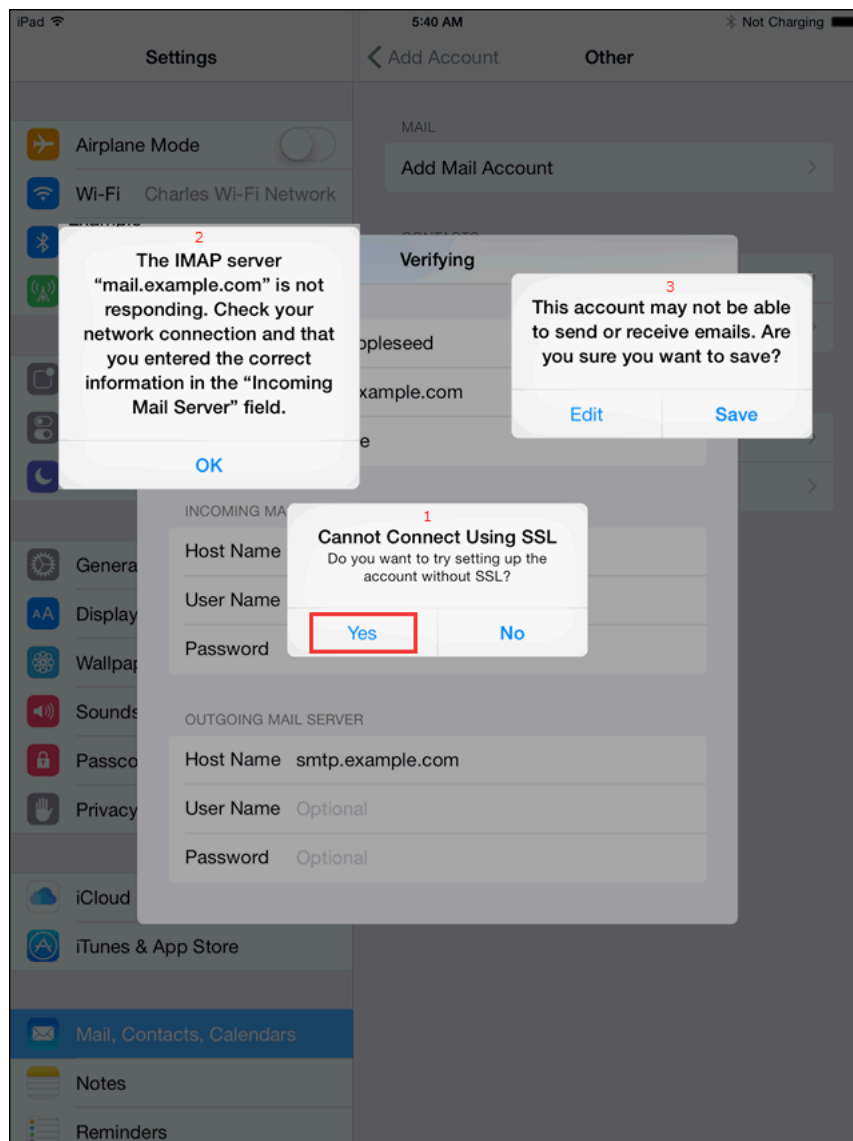
password: current password



iPhone/iPad email setup guide



7. Tap on Yes in “Cannot Connect Using SSL”



iPhone/iPad email setup guide



8. You are done 😊

